

EXPLOSIVE FIGHTING GAME BLOWOUT

NINTENDO POWER

P.O. Box 97043
Redmond, WA 98073-9743

FORWARDING & RETURN POSTAGE GUARANTEED
ADDRESS CORRECTION REQUESTED

BULK RATE
U.S. POSTAGE
PAID
NINTENDO
OF AMERICA INC.

NEW
COMIC
ADVENTURE
Star Wars: Shadows
of the Empire

MORTAL KOMBAT



Increase your mortality rate

T R I L O G Y

IN-DEPTH
STREET FIGHTER
ALPHA 2

Inside Look

OCT VOLUME 89
US \$4.95 / CANADA \$5.95



0 45496 69105 9

Interview

Development



CLASSIFIED INFORMATION

0428 6211 4842 0680

MEMBER IDENTIFICATION #

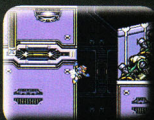
MEGA MAN X3

Chip Enhancer

In Mega Man X3, the Blue Bomber's special abilities can be supercharged with special Enhancement Chips from Dr. Light. Normally, you can carry and use only one chip at a time, but there's a special Chip Enhancer that will let you use all four at once. To find it, you must have all eight Heart Tanks, all four Sub Tanks, the four Robot Suits and the Dash Boots, Mega Buster, Armor and Sensor/Helmet Upgrades. Now make your way through the first stage of Dr. Doppler's Lab until you reach an area where spiked metal balls are raining down. Jump into the pit and slide down the left side of the shaft until you come to a secret tunnel. Go left to meet up with Dr. Light. He'll give you the Chip Enhancer and all four Enhancement Chips! You can't use Zero to get to the room, and all your tanks must be full for Dr. Light to appear.



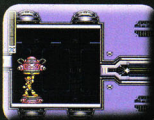
Make sure all your Heart Tanks and Sub Tanks are full.



Slide down the pit and press Left to find the secret tunnel.



The doctor will upgrade you with the latest tech.



Your robot body will gleam with newfound power!

JACK BROS.

Stage Passwords

It's nearly Halloween, and the Jack Bros. are ready for some bewitching adventure on the Virtual Boy. We have no tricks for this game, but here are a few sweet treats for you puzzle/adventure fans.

Jack Frost	
Grim Reaper's Cavern	3267
Temple of Nightmare	8453
Dragon's Belly	1309
Mecha Fortress	7285

Jack O'Lantern	
Grim Reaper's Cavern	4965
Temple of Nightmare	5923
Dragon's Belly	0919
Mecha Fortress	2827
Crystal Palace	6313

Jack Skelton	
Grim Reaper's Cavern	0248
Temple of Nightmare	2745
Dragon's Belly	9537
Mecha Fortress	3598
Crystal Palace	0531



Which Jack will you choose for your adventure?



Being a "Jack of all trades" may not be a bad thing!

SimCity

Extra Landforms and Clear Data

To mark the rerelease of this Super NES classic, we printed a detailed review of Sim City last issue, including the millionaire code. This month, we'll tell you how to clear data from your game and access hidden land forms. To clear all saved cities and reset the scenarios, press L, R, Select, Start and B simultaneously on the title screen. If the 1,000 standard landforms aren't quite what you're looking for in a city site, there are 1,000 extra landforms hidden in the game. To access one of the hidden landforms, start a new city but don't build anything. Wait for at least 15 seconds, then go to the Load/Save screen and select the Go To Menu option. Don't save your game. Now start another city. When the Map Select screen appears, the map number displayed will be the same as the one you chose previously, but the landform itself will be different.



Follow the instructions given to turn this landform...



...into this one. All of the extra landforms are unique.



Chapter Passwords

These passwords will help you guide The Ghost Who Walks through the dangers of the urban jungle. There are several major paths through the game, and the endings you see will differ according to your actions.

Chapter 2
JVH9TWGZTLDG
GGB8LNDGCG?FW
KBGDY79KHYYQQ
5NCZ?2B9FDD4

Chapter 3
DVH1Y1G97LDF
8JBXQ6CHH2FW
KBGDY79QJYS8
5N1Z411P-7Y?

Chapter 4
BBJM51PB3KXF
8J8DJ?1HN3YW
KBQDY917JYS8
5M1746FV23QT

Chapter 6
JBBH33PNHSHWF
8X?DJ?1JB2JT
YCQDY1X3JYS7
5M29ZD2-RNW6

Chapter 5
JGBH33PH8LXF
8X8DJ?11J6DW
KCQDY1W3JYS7
5M276VC7K54S

Chapter 7
JDB195PS6SYF
8X9WJ?1HH9JQ
2CQDYHT4GZS7
5C29VJMRHWJK



These passwords may take you to parts of the game you've never seen before.



Will you solve the riddle of the Ghost Jungle, or will the forces of evil triumph?

PANIC BOMBER

Stage Passwords

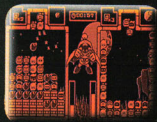
In Volume 85, we gave you a special password for a "bosses only" game. Now we have passwords to the regular stages. Bombs away!

Sinister Forest
Desert of Desolation
Doom Castle

2695
1038
6934



Enter these passwords as normal.



And whatever you do, don't panic!